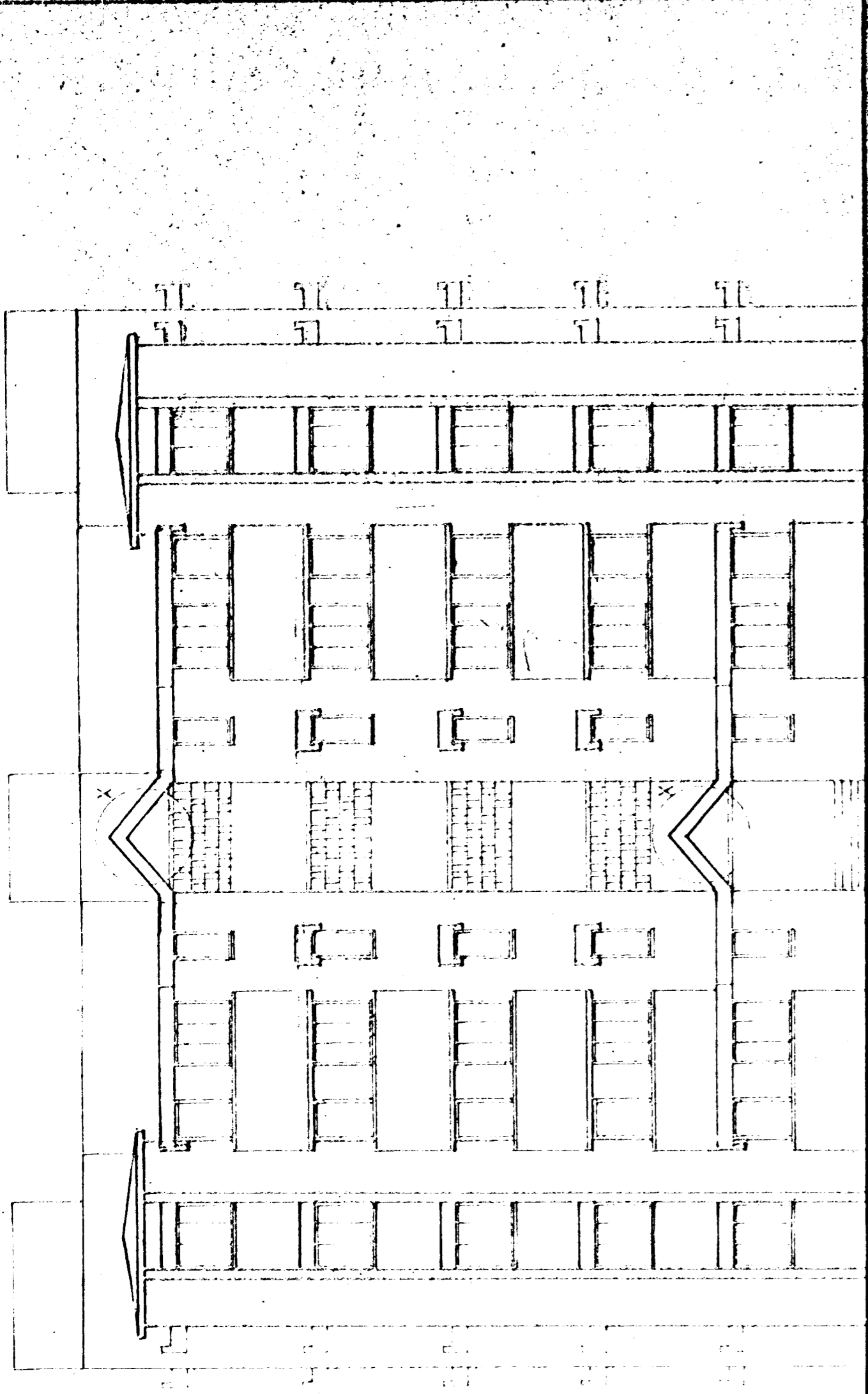
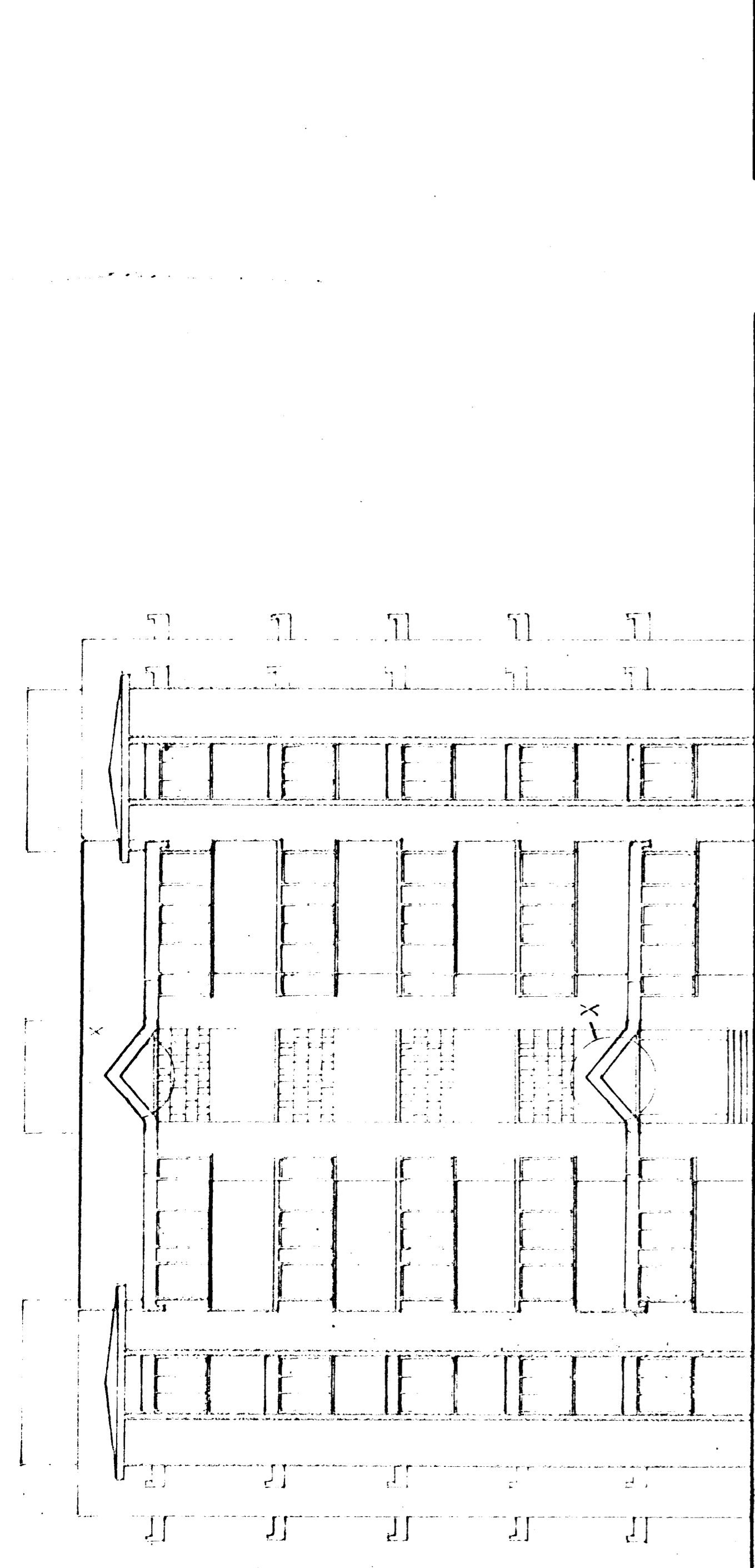


Authority: ...
 APPROVED IN THE CHIEF SECRETARY'S REVIEW COMMITTEE MEETING HELD ON 18TH NOV 1989 AND APPROVAL CONVEYED BY GOVT. LETTER, P.M.O. NO. 806/10887-11 P.52, DATED 25 NOV. 1989.

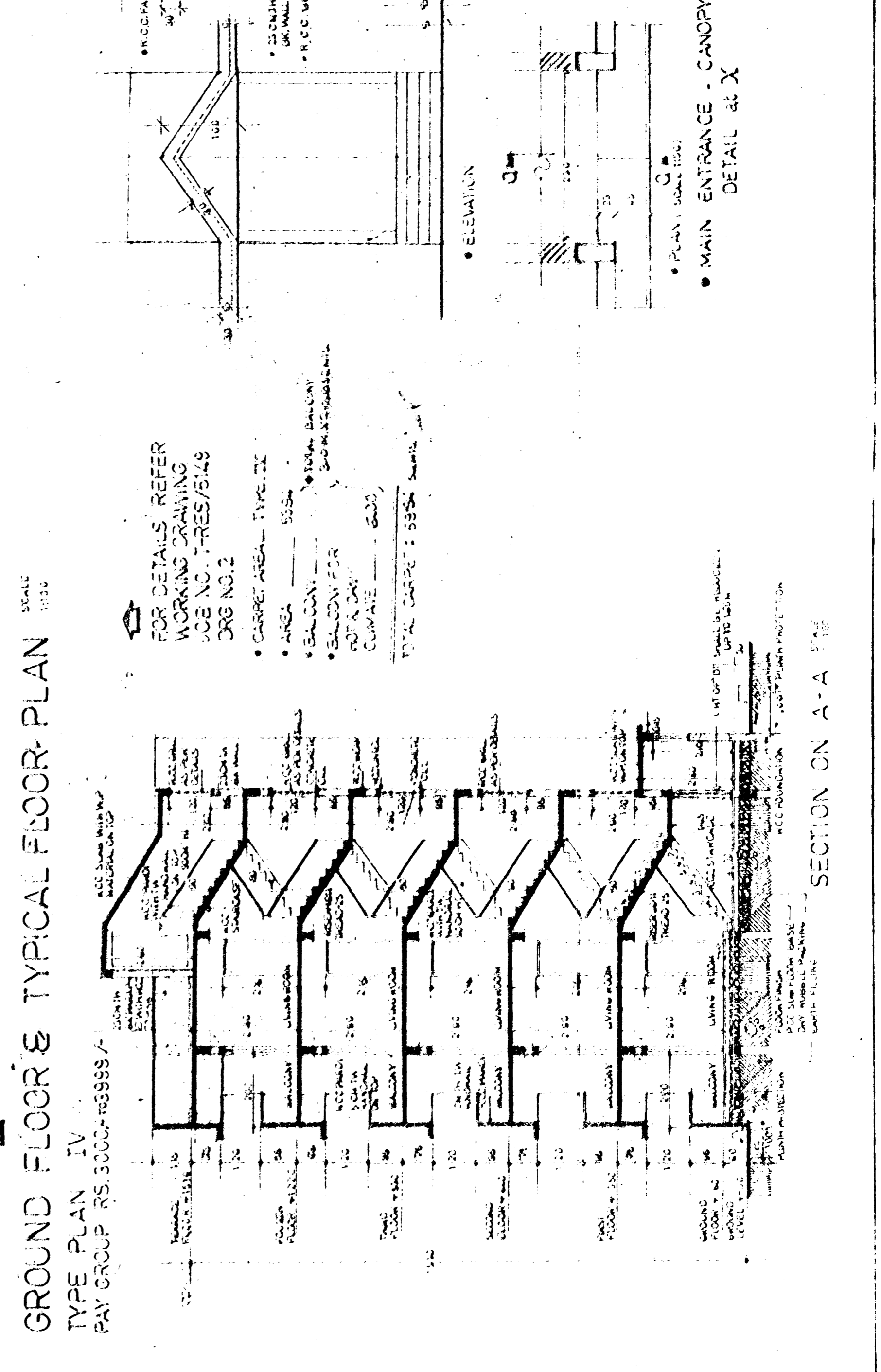
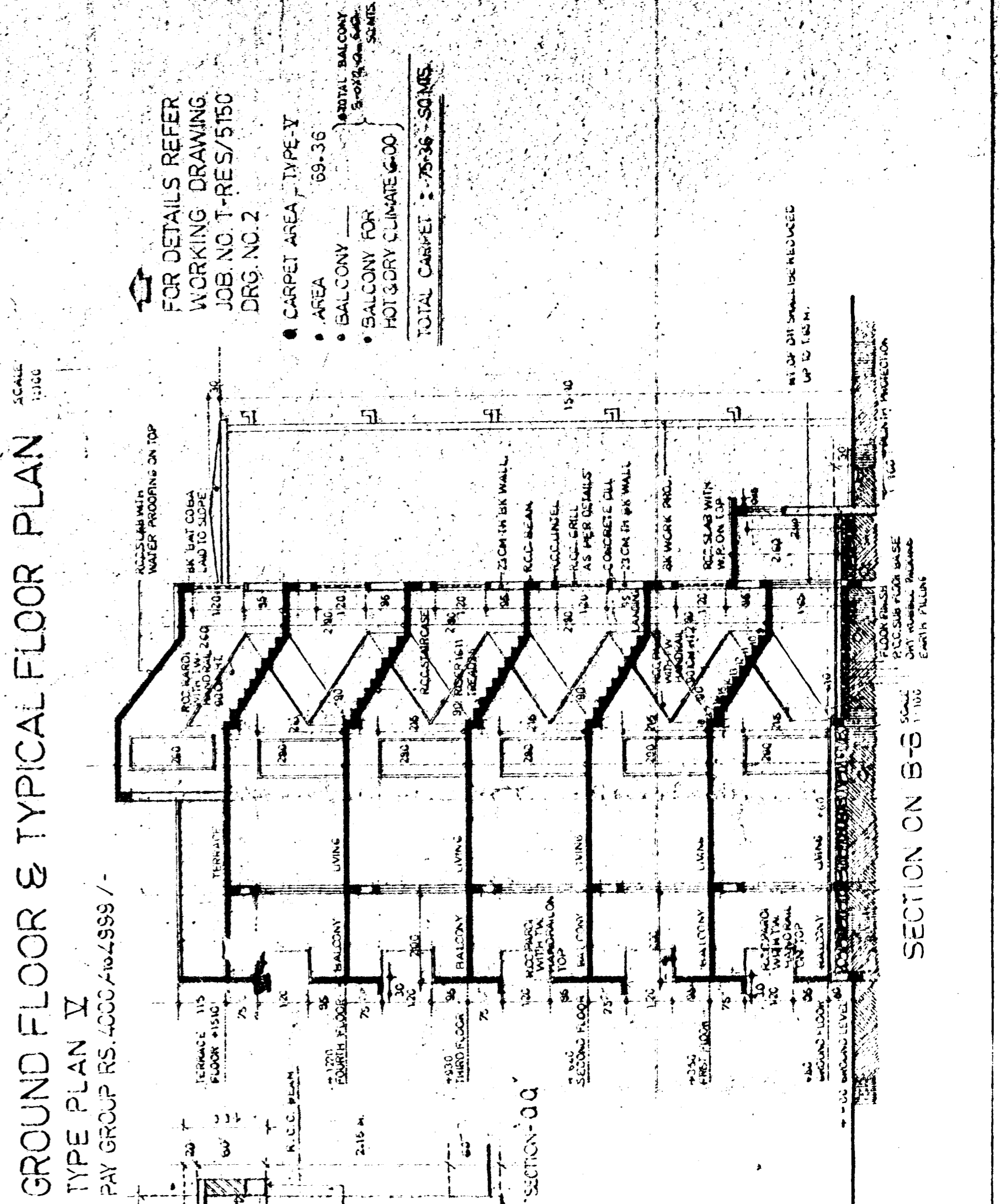
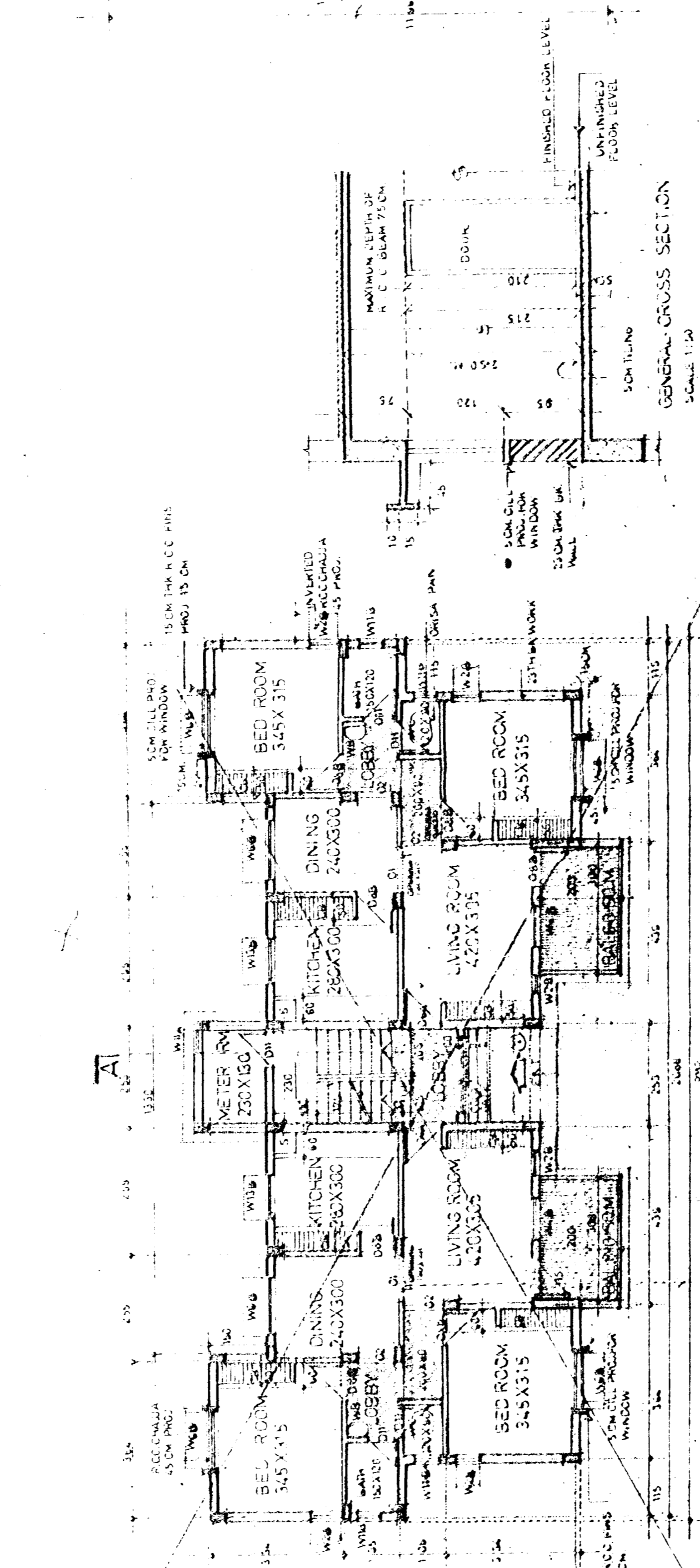
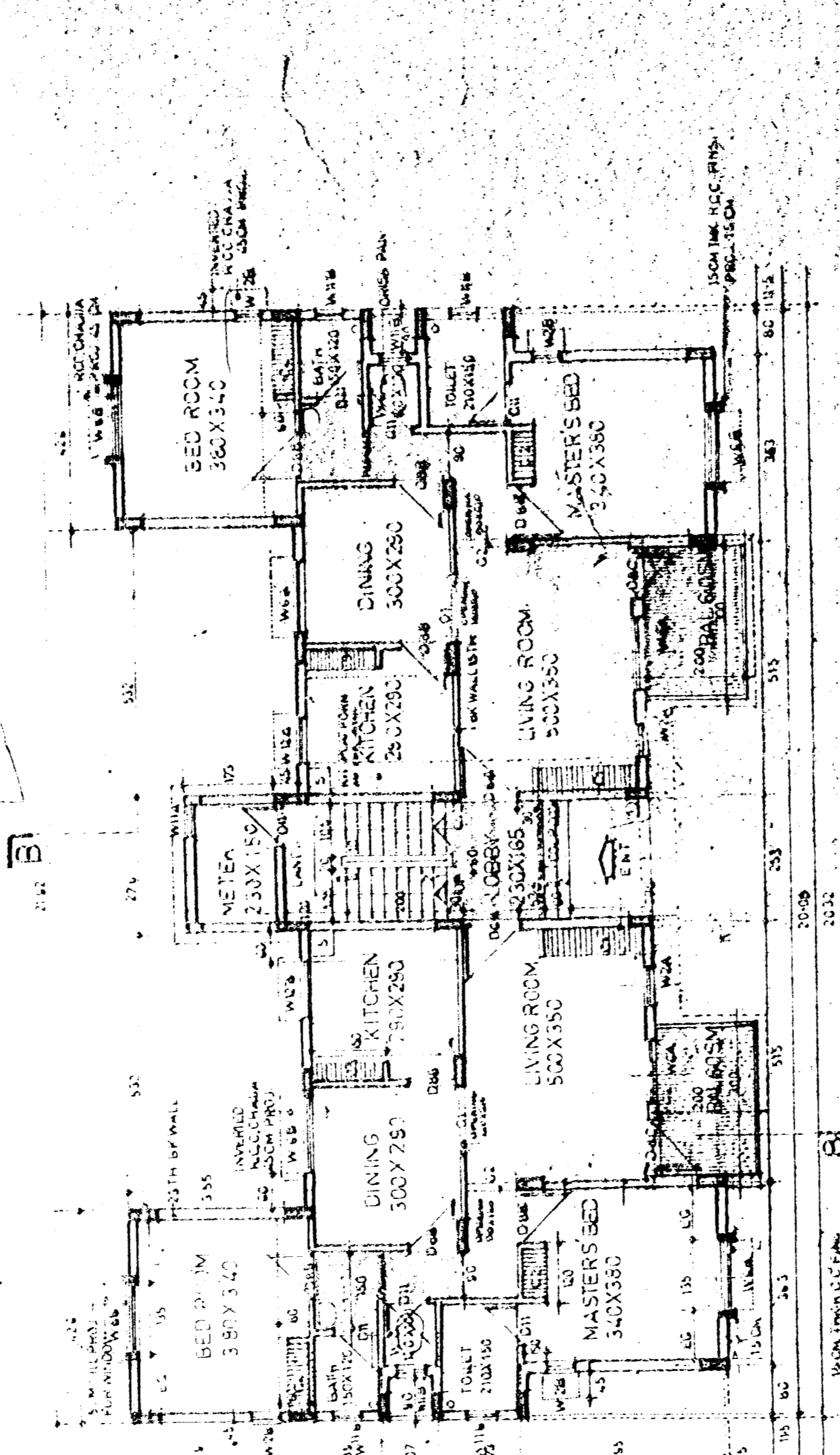
- NOTES**
1. ALL DIMENSIONS ARE IN CENTIMETRES - M.M.
 2. INTERIOR FINISHES AS NOTED.
 3. FINISHES TO BE AS NOTED.
 4. FLOOR LEVELS OF R.I.C. AND STAIRS TO BE AS NOTED.
 5. FLOOR LEVELS TO BE AS NOTED.
 6. FLOOR LEVELS TO BE AS NOTED.
 7. ALL SIZES OF DOORS WINDOWS ARE INCLUDING OF FINISHES.
 8. ALL SIZES OF DOORS WINDOWS ARE INCLUDING OF FINISHES.
 9. ALL SIZES OF DOORS WINDOWS ARE INCLUDING OF FINISHES.
 10. ALL SIZES OF DOORS WINDOWS ARE INCLUDING OF FINISHES.



ELEVATION



ELEVATION



NO.	DATE	REVISIONS	CONTENTS
1			
2			

OFFICE OF THE ARCHITECT TO GOVT. MAHARASHTRA STATE P.W.D. BOMBAY

ARCHITECT TO GOVERNMENT

TYPE DESIGN FOR RESIDENTIAL CURTS

WORKING DRAWING PLANS - ELEVATIONS - SECTIONS

JOB NO. T-RES-5156

DATE

SCALE

JOB NO. T-RES-5156

DRG. NO. 2